

GENESIS GV60



All prices are retail prices of Genesis Motor Switzerland AG including delivery and VAT, excluding registration fees. Including our 5 Year Care Plan and 5 years' warranty, according our 5 year Care Plan and warranty terms and conditions.

GENESIS GV60

Model Line

Packages

Colour

Optional Equipment

Price

Main standard features

Premium

RWD Single Motor
168 kW (229 PS)
64'200 CHF
Electric energy consumption
(combined): 17,0 kWh/100km;
CO₂ emissions (combined): 0 g/km;
Energy Efficiency Class A.*

Exterior

Quad LED headlamps with High Beam Assist (HBA) • LED daytime running light (DRL) • Rear LED stop lamp, fog lamps & combination lamp • LED reverse guidelines • Rear spoiler with integrated stop light • Exterior mirror, electrical adjustable, heatable & foldable • Puddle lamp with Genesis logo projection • Hidden exterior door handle in body color • Acoustic windshield • Laminated glass front side & rear

Wheels

Front & rear brake ventilated disc • Brake caliper, unpainted silver • 19" alloy wheels, silver, technical-spoke design • Tyre pressure monitoring system (TPMS) • Tyre mobility kit (TMK) • High performance damper, front & rear

Interior

Cup holder, center armrest • Interior garnish, bronze • Steering wheel, leather & heated • Headlining, sunvisor, A/B/C pillar cover & door center trim with fabric • Rear luggage cover • Interior mirror with auto dimming • Crystal Sphere

Seats

Seat cover with high-quality artificial leather • Front & rear headrest adjustment • Memory function (driver seat) & electric adjustment (driver & passenger seat) • Ergo-motion seat with massage function (driver seat) • Electric lumbar support (driver & passenger) • Electric height adjuster (driver & passenger) • Electric cushion tilt-up (driver & passenger) • Side bolster + cushion & back cushion adjuster (driver) • Electric cushion extension (driver) • Premium relaxation seat (driver & passenger) • Steering wheel, electric adjustable with memory function • Heated seats (front & rear) • Ventilated seats (front) • Rear bench, foldable 60/40

Safety

Airbag, driver & passenger • Airbag, driver knee • Airbag, thorax + side curtain (front & rear) and pelvis (front) • Airbag, front center • ABS + ESC + DBC + HAC + Trailer stability assist (TSA) + Multi-collision brake (MCB) • eCall • ISOFIX, rear seats • Child door lock, automatic • Rain sensor

Advanced safety

Smart cruise control (SCC) with stop & start • Blind-spot collision-avoidance assist (Rear BCA) • Lane keeping assist (LKA) & Lane following assist (LFA) • Forward collision-avoidance assist (car/pedestrian/bicycle) (FCA) & junction turning (FCA-J) • Intelligent speed limit assist (ISLA) • Manual speed limit assist (MSLA) • Highway driving assist (HDA)

Infotainment

12.3" Genesis Infotainment System with integrated navigation, Apple CarPlay, Android Auto, voice recognition and DAB radio • 12.3" digital instrument cluster • Speakers front & rear door, front & rear tweeter, center front speaker, external amp • Steering wheel with control buttons • Digital key 2.0 • Face recognition • Parking sensors (front & rear) • Rear view camera (RVM) with dynamic guidelines • Finger print authentication system

Convenience

Battery heating system • Electric parking brake (EPB) with autohold function • Ambient lighting including foot area • Premium air filter with air purification system • Keyless Go • Immobilizer • Central door lock • Driving feeling switch • Shift paddles • 12V power outlet, rear • 2-zone climate control • 2nd row heating floor output • Window defogger, automatic • USB port, rear (2x Type C) • USB port, center console front (2x Type A) • Manual rear side curtain • Power outlet for trunk • Wireless phone charger, front • Rear seat alert (with sensor) • Tailgate, electric and height adjustable • Trailer package (wiring only)

BEV specific

400 V / 800 V charging technology • i-Pedal • Smart regenerative braking • Drift Mode • Virtual gearshift • Domestic cable (AC) ICCB (in cable control box) type 2 mode 2 • Public charging cable (AC) type 2 mode 3 • Heat pump • PTC heater

* The values are based on the Worldwide Harmonised Light Vehicles Test Procedure (WLTP). Further information on the WLTP measurement procedure can be found at <https://www.genesis.com/ch/en/wltp.html>

PACKAGES

	Price	Sport includes main standard features above	
Sport	AWD Dual Motor 160 kW + 74 kW (234 kW / 318 PS)	Wheels	Alloy wheels 20"
	70'000 CHF Electric energy consumption (combined): 18,8 kWh/100km; CO ₂ emissions (combined): 0 g/km; Energy Efficiency Class B.*		
	Price	Sport Plus includes main standard features above	
Sport Plus	AWD Dual Motor 180 kW + 180 kW (360 kW / 490 PS) 83'900 CHF Electric energy consumption (combined): 19,1 kWh/100km; CO ₂ emissions (combined): 0 g/km; Energy Efficiency Class B.*	Wheels	Brake caliper "Black" • 21" alloy wheels, silver, technical-spoke design
		Interior	Interior Garnish, aluminium • Headlining, sunvisor, A/B/C pillar cover & door center trim with velour • Sport pedals in metal
		Seats	Dashboard with high-quality artificial leather • Seat cover with nappa leather
		Convenience	Preview Electronic Control Suspension (preview ECS) • Electronic limited slip differential
		BEV specific	Boost Mode

COLOURS AND TRIM

EXTERIOR COLOURS

Solid	Metallic	Pearl	Matte
Alta White 0 CHF	Hanauna Mint 940 CHF	Capri Blue 940 CHF	Matterhorn White 1400 CHF
Vik Black 940 CHF	Uyuni White 940 CHF	Mauna Red 940 CHF	Makalu Gray 1400 CHF
Savile Silver 940 CHF	Makalu Gray 940 CHF	Storr Green 940 CHF	Storr Green 1400 CHF

INTERIOR COLOURS

Premium / Sport Standard	Obsidian Black	Dark Gray / Glacier White		
Premium / Sport Optional	Obsidian Black	Dark Gray / Glacier White	Monstera Green / Glacier White	Monstera Green / Camel Beige
Sport Plus Standard	Obsidian Black	Dark Gray / Glacier White	Monstera Green / Glacier White	
Sport Plus Optional	New Navy			

TRIM

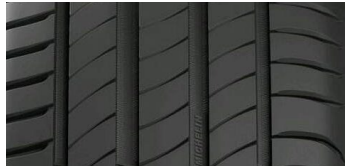
Premium / Sport Standard	Insert Film B (Bronze)
Premium / Sport Optional & Sport Plus Standard	Aluminium A (Digital Dots)
	Aluminium F (Hexagonal)
Premium / Sport / Sport Plus Optional	Aluminium D (Arrows)

Some illustrations show optional equipment.

WHEELS AND TYRES



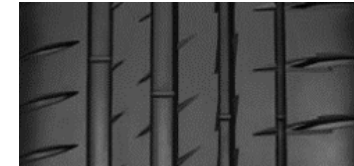
19" Alloy
Silver, technical-spoke design
Premium Standard



Summer
Primacy 4
235/55 R19 105 W (FW & RW)



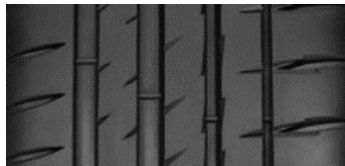
20" Alloy
Silver, technical-spoke design
Sport Standard



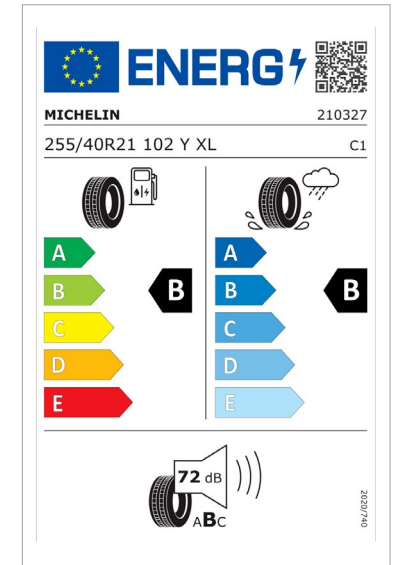
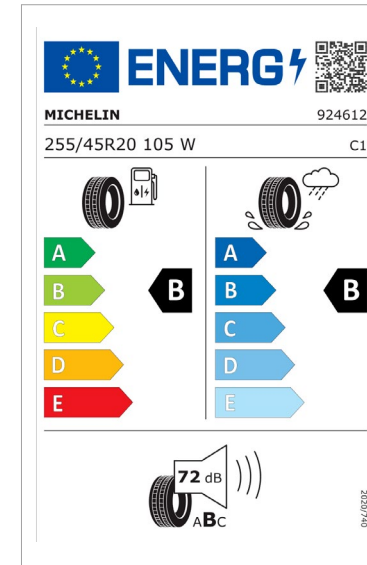
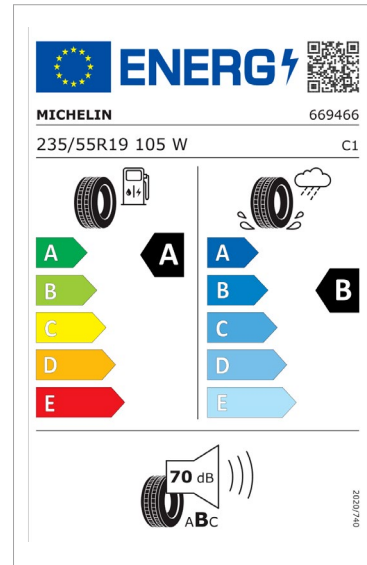
Summer
Pilot Sport EV
255/45 R20 105 W (FW & RW)



21" Alloy
Silver, technical-spoke design
Sport Plus Standard



Summer
Pilot Sport EV
255/40 R21 102 Y XL (FW & RW)



OPTIONAL EQUIPMENT

Available options			
Premium & Sport & Sport Plus	Innovation Pack	Parking collision-avoidance assist (Reverse PCA) • Quad LED Headlamps with intelligent front lighting system (IFS) • Forward collision assist - junction turning & crossing (FCA-JX) • Remote smart parking assist (RSPA) • Head-up display • Surround view monitor (SVM) • Blind-spot view monitor (BVM) • Highway driving assist (HDA II)	3'700 CHF
	Nappa Leather Seat Pack <i>(Standard on Sport Plus)</i>	Seat cover with nappa leather • Headlining, sunvisor, A/B/C pillar cover & door center trim with velour • Interior garnish, aluminium • Dashboard with high-quality artificial leather	3'610 CHF
	Bang & Olufsen Audio System	Active road noise canceling (RANC) • Bang & Olufsen audio system with surround sound • Speakers rear quarter, front & rear tweeter, center front speaker, external amp & surround sound	1'260 CHF
	Sunroof	Personal LED lamp • Panorama vision roof, fixed and none openable • Roof rails	1'430 CHF
	Vehicle-to-load Pack	Vehicle-to-load (V2L) plug, outside & inside	1'120 CHF
	ECM	Exterior mirror with auto dimming	100 CHF
	Brake caliper	Brake caliper "White" (NOT AVAILABLE FOR SPORT PLUS) • Brake caliper "Copper" (NOT AVAILABLE FOR SPORT PLUS)	360 CHF
Additional options only for Sport	ECS <i>(Standard on Sport Plus)</i>	Preview electronic control suspension (ECS)	830 CHF
Additional options only for Sport Plus	Performance Nappa Leather Seat Pack	Sport seat design (includes seat cover with nappa leather, headlining, sunvisor, A/B/C pillar cover & door center trim with velour, dashboard with high-quality artificial leather & interior garnish, aluminium)	310 CHF
	Brake caliper	Brake caliper "Lime"	360 CHF

TECHNICAL SPECIFICATIONS

BATTERY & E-MOTOR

	Premium	Sport	Sport Plus
Type of battery		Li-ion	
Battery Capacity		77,4 kWh	
Range Combined (WLTP)	517 km	470 km	466 km
Range City (WLTP)	691 km	636 km	621 km
Weight		478.8 kg	
Operating Voltage		697 V	
On Board Charger capacity	7 (Single-phase) / 10.5 (Three-phase) 220 V / 11 (Three-phase) 230 V		
Max. output, front	-	74 kW (100 PS)	180 kW (245 PS)
Max. output, rear	168.1 kW (229 PS)	160 kW (218 PS)	180 kW (245 PS)
Max. total output	168.1 kW (229 PS)	234 kW (318 PS)	360 kW (490 PS)
Max. torque	350 Nm	605 Nm	700 Nm

VEHICLE TO LOAD CAPACITY

	Premium	Sport	Sport Plus
Max. power		3.7 kW	

DRIVING DYNAMICS AND SAFETY

	Premium	Sport	Sport Plus
Suspension type, front	MacPherson Twin arm		
Suspension type, rear	5 Link Multi-link		
Brake type, front	ventilated / Ø360X34t		
Brake type, rear	ventilated / Ø360X20t		
Steering ratio	12.57		
Turning radius	5.97 m		
Tyres	235/55 R19	255/45 R20	255/40 R21
Rims	8.0J x 19	8.5J x 20	8.5J x 21

CHARGING CABLES

	Premium	Sport	Sport Plus
Domestic cable (AC) ICCB			
Length		5 m	
Max. Voltage		230 V	
Max. Amperage		12 A	
Type		Type 2 <-> Type E	
Public charging cable (AC) Type 2 Mode 3			
Length		5 m	
Max. Voltage		480 V	
Max. Amperage		32 A	
Type		Type 2 <-> Type 2	

PERFORMANCE

	Premium	Sport	Sport Plus
Acceleration 0–100 km/h	7.8 sec	5.5 sec	4.0 sec (in boost mode ²)
Acceleration 80–120 km/h	5.1 sec	3.7 sec	2.5 sec (in boost mode ²)
Top speed	185 km/h	200 km/h	235 km/h

ELECTRIC ENERGY CONSUMPTION & EMISSIONS WLTP¹

	Premium	Sport	Sport Plus
Combined (kWh/100 km)	17.0	18.8	19.1
City (kWh/100 km)	12.8	13.8	14.3
Gasoline equivalent (l/100 km)	1.87	2.07	2.11
CO ₂ Emissions (combined)		0 g/km	
CO ₂ emissions from electricity provision	15.98 g/km	17.67 g/km	17.99 g/km
Energy Efficiency Class	A	B	
Average CO ₂ Emissions of all models offered in Switzerland		122 g/km	
Provisional CO ₂ Emissions for models available in Switzerland		118 g/km	

BODY

	Premium	Sport	Sport Plus
No. of doors / seats		4 / 5	
Length / Width / Height (running order)	4515 mm / 1890 mm / 1580 mm		
Wheelbase	2900 mm		
Overhang, front / rear	830 mm / 785 mm		
Minimum ground clearance	160 mm		
Minimum turning circle	11.94 m		
Mass in running order (minimum)	1975 kg	2095 kg	2145 kg
Max. laden mass	2495 kg	2610 kg	2660 kg
Max. trailer load, braked	1600 kg		
Max. trailer load, unbraked	750 kg		
Vertical load	100 kg		
Luggage comp. capacity (VDA)	432 l		
Coefficient of drag	0.29		

CHARGE TIME

	Premium	Sport	Sport Plus
Quick Charge DC (10% > 80%) 350 kW		18 Minutes	
Quick Charge DC (10% > 80%) 50 kW		73 Minutes	
Standard AC (10% > 100%) 230 V 16 A 3P / 11 kW		7 Hours 20 Minutes	
Domestic charge with ICCB AC (10% > 100%) (in cable control box)		34 Hours 20 Minutes	

¹ The consumption and emission values shown were determined according to the statutory legal measurement procedures. The fuel consumption and emission values shown are based on the Worldwide Harmonised Light Vehicles Test Procedure (WLTP). Further information on the WLTP measurement procedures can be found at <https://www.genesis.com/ch/en/wltp.html>. Due to the more realistic test conditions, the fuel consumption and CO₂ emission values measured in accordance with the WLTP are often higher than those measured according to the NEDC. The optional equipment you have selected during configuration may result in your configured model corresponding to a different approved vehicle type than a vehicle without the optional equipment. This may also cause deviations in the values for the configured model.

² Boost mode adds a 10-second power boost thanks to the additional 20 kW per each motor.

GRAPHICAL REPRESENTATION OF THE ENERGY EFFICIENCY CLASSES

EV RWD SINGLE MOTOR

+ **Energieetikette 2024**

Modell	GENESIS GV60 EV
Antriebsart	Heckantrieb
Leistung	168 kW / 229 PS
Leergewicht	2120 kg

Verbrauch Elektrisch
17.0 kWh/100 km

CO₂-Emissionen
Dieses Modell
0 g/km

0 g/km Ziel >250 g/km
118 g/km

Energieeffizienz

A

Weitere Informationen finden Sie unter www.verbrauchskatalog.ch

TC 16A03 (en)

EV AWD DUAL MOTOR

+ **Energieetikette 2024**

Modell	GENESIS GV60 EV
Antriebsart	Allrad
Leistung	233 kW / 318 PS
Leergewicht	2235 kg

Verbrauch Elektrisch
18.8 kWh/100 km

CO₂-Emissionen
Dieses Modell
0 g/km

0 g/km Ziel >250 g/km
118 g/km

Energieeffizienz

B

Weitere Informationen finden Sie unter www.verbrauchskatalog.ch

TC 16A04 (en)

+ **Energieetikette 2024**

Modell	GENESIS GV60 EV
Antriebsart	Allrad
Leistung	360 kW / 489 PS
Leergewicht	2285 kg

Verbrauch Elektrisch
19.1 kWh/100 km

CO₂-Emissionen
Dieses Modell
0 g/km

0 g/km Ziel >250 g/km
118 g/km

Energieeffizienz

B

Weitere Informationen finden Sie unter www.verbrauchskatalog.ch

TC 16A05 (en)