

GENESIS GV70



All prices are retail prices of Genesis Motor Switzerland AG including delivery and VAT, excluding registration fees. Including our 5 Year Care Plan and 5 years' warranty, according our 5 year Care Plan and warranty terms and conditions.

GENESIS GV70

Model Line

Engine

Colour

Optional Equipment

Model Line	Price	Main standard features
Premium	Diesel 2.2 8AT AWD 148 kW (201 PS) 2HC5 / DX1 58'400 CHF¹ Total consumption (combined): 7,6 l/100 km; CO ₂ emissions (combined): 200 g/km (according to WLTP) ² . Energy efficiency class: F.	Exterior Dual front LED headlamps (low & high projection) • LED Daytime Running Light (DRL) • LED rear stop lamp • LED rear fog lamps • LED rear combination lamp • Lighting backup guidelines • Exterior mirrors electrical adjustment, heated & electrical folding • Upper chrome radiator grille (ONLY AVAILABLE FOR PEARL / METALLIC EXTERIOR COLOR) • Outside door handles chrome coating Wheels Front & rear brake ventilated disc • Alloy wheels 19 inch • Tyre pressure monitoring system Interior Cup holder center armrest • Black high glossy interior trim • Leather steering wheel • Cloth headlining • Cloth A/B/C pillars • Cloth sunvisor (driver & passenger) • Console storage box • Rear luggage cover Seats Leatherette seat cover • Manual headrest adjustment (up/down/back/forth) • Electric Seat Adjustment (driver & passenger) • Driver seat with memory function • Electric lumbar support (driver & passenger) • Electric height adjuster (driver & passenger) • Electric cushion tilt-up (driver & passenger) • 60:40 split back folding Safety Driver & passenger airbag • Driver knee airbag • Front thorax & pelvis, rear thorax & side curtain (front & rear) airbag • Centre side (front) airbag • ABS + ESC + DBC + HAC + TSA (Trailer Stability Assist) + MCB (Multi-Collision Brake) • eCall
	Petrol 2.5T 8AT AWD 223.6 kW (304 PS) L9G1 / GX1 63'000 CHF¹ Total consumption (combined): 10,1 l/100 km; CO ₂ emissions (combined): 230 g/km (according to WLTP) ² . Energy efficiency class: G.	Advanced safety SCC (Smart Cruise Control) with stop & start • Rear BCA (Blind-spot Collision-avoidance Assist) • LKA (Lane Keeping Assist) • FCA (Forward Collision-avoidance Assist) (car/pedestrian/bicycle) • ISLA (Intelligent Speed Limit Assist) • MSLA (Manual Speed Limit Assist) • FCA-J (Forward Collision-avoidance Assist - Junction Turning) • LFA (Lane Following Assist) Infotainment 14.5 inch screen with navigation and DAB radio • Apple CarPlay & Android Auto • Genesis Connected Services • Steering wheel audio remote control • Bluetooth with voice recognition • Finger print reader authentication • Speakers front & rear door • Tweeter + external AMP + center (front) speaker Convenience Preview ECS (Electronic Control Suspension) • Electric tilt & telescopic steering wheel with memory function • EPB (Electric Parking Brake) with autohold • ISOFIX child anchor: upper & lower (rear) • Child door lock (auto) • Temporary Mobility Kit (on diesel – temporary spare tyre on petrol) • Auto high beam & dusk sensor • Front side laminated glass • Windshield acoustic film • Smart key & button start • Immobilizer • Central door lock driver, passenger & rear control • 8 inch dashboard cluster TFT display • Paddle shifter • Rear parking sensors • RVM (Rear View Monitor) with dynamic guidelines on screen • Rain sensor • Power outlet for rear (lower center console) • Power outlet for trunk • USB charger console front (2 ports) • USB rear (2 ports) • Front air conditioning with dual zone adjustment • 2nd row heating floor output • Auto window defogger • Console ventilation duct • Seat occupant detection • Electrochromatic inside rear view mirror • Drive mode select • Electric rear tailgate opening & height adjustable • Rear air condition (manual) • Standard rear side + backlite glass • Puddle lamp with logo • Trailer package (wiring only)

¹ Consumption and CO₂ information, efficiency classes and other technical information can be found on page 7.

² The values are based on the Worldwide Harmonized Light Vehicles Test Procedure (WLTP). Further information on the WLTP measurement procedure can be found at <https://www.genesis.com/ch/en/wltp.html>

Model Line	Price	Luxury includes main standard features above	
Luxury	Diesel 2.2 8AT AWD 148 kW (201 PS) 2HCS / DX2 63'500 CHF¹ Total consumption (combined): 7,6 l/100 km; CO ₂ emissions (combined): 200 g/km (according to WLTP) ² . Energy efficiency class: F.	Exterior	Electrochromatic outside rear view mirror
		Wheels	Alloy wheels 21 inch
		Interior	Aluminium interior garnish • Heated steering wheel • Leatherette console box
		Seats	Leatherette dashboard • Leather seat cover • Heated seats (front)
	Petrol 2.5T 8AT AWD 223.6 kW (304 PS) L9G1 / GX2 68'100 CHF¹ Total consumption (combined): 10,1 l/100 km; CO ₂ emissions (combined): 230 g/km (according to WLTP) ² . Energy efficiency class: G.	Convenience	Ambient lightning • Rear air conditioning: auto temp. control (3rd zone) • Premium air filter

Model Line	Price	Sport includes main standard features above	
Sport	Diesel 2.2 8AT AWD 148 kW (201 PS) 2HCS / DX3 61'900 CHF¹ Total consumption (combined): 7,6 l/100 km; CO ₂ emissions (combined): 200 g/km (according to WLTP) ² . Energy efficiency class: F.	Exterior	Chrome coating grille • Black molding bumper • Black roof rack • Black door molding • Black beltline molding • Black skid plate • Electrochromatic outside rear view mirror • Sport specific steering wheel • Metal pedals
		Wheels	Alloy wheels 19 inch • Brake caliper colour red
		Interior	Aluminium interior garnish • Heated steering wheel • Leatherette console box
		Seats	Leatherette dashboard • Partial leather seats • Heated seats (front)
	Petrol 2.5T 8AT AWD 223.6 kW (304 PS) L9G1 / GX3 66'500 CHF¹ Total consumption (combined): 10,1 l/100 km; CO ₂ emissions (combined): 230 g/km (according to WLTP) ² . Energy efficiency class: G.	Convenience	Ambient lightning • Rear air conditioning: auto temp. control (3rd zone) • Premium air filter • Rear side & backlite privacy glass

¹ Consumption and CO₂ information, efficiency classes and other technical information can be found on page 7.

² The values are based on the Worldwide Harmonised Light Vehicles Test Procedure (WLTP). Further information on the WLTP measurement procedure can be found at <https://www.genesis.com/ch/en/wltp.html>

COLOURS AND TRIM

EXTERIOR COLOURS – PREMIUM

Solid	Metallic			Pearl	Pearl Metallic	Matte		
Alta White 0 CHF	Savile Silver 920 CHF	Makalu Gray 920 CHF	Capri Blue 920 CHF	Storr Green 920 CHF	Uyuni White 920 CHF	Vik Black 920 CHF	Makalu Gray 1'390 CHF	Storr Green 1'390 CHF

EXTERIOR COLOURS – LUXURY

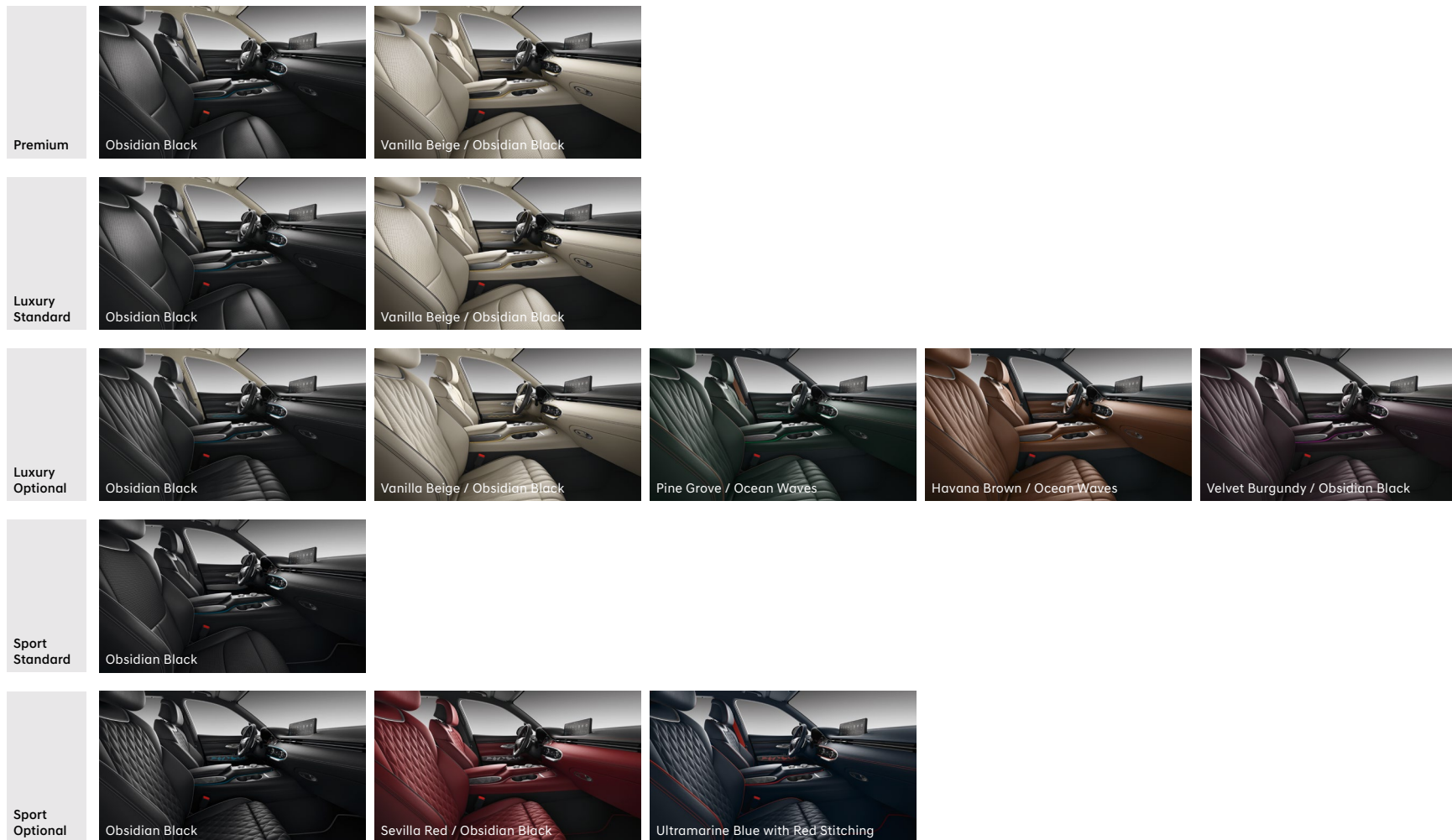
Solid	Metallic			Pearl	Pearl Metallic	Matte		
Alta White 0 CHF	Savile Silver 920 CHF	Makalu Gray 920 CHF	Capri Blue 920 CHF	Storr Green 920 CHF	Uyuni White 920 CHF	Vik Black 920 CHF	Makalu Gray 1'390 CHF	Storr Green 1'390 CHF

EXTERIOR COLOURS – SPORT

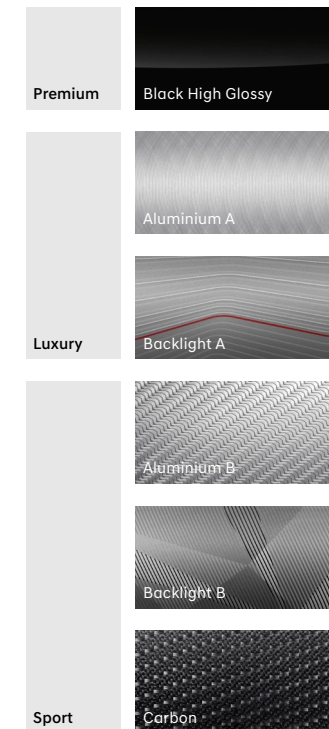
Solid	Metallic			Pearl	Pearl Metallic	Matte				
Alta White 0 CHF	Savile Silver 920 CHF	Makalu Gray 920 CHF	Capri Blue 920 CHF	Mauna Red 920 CHF	Storr Green 920 CHF	Uyuni White 920 CHF	Vik Black 920 CHF	Matterhorn White 1'390 CHF	Makalu Gray 1'390 CHF	Storr Green 1'390 CHF

COLOURS AND TRIM

INTERIOR COLOURS



TRIM



Some illustrations show optional equipment.

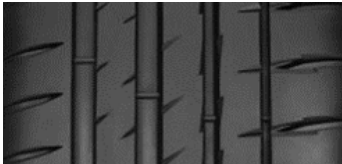
WHEELS AND TYRES




19" Alloy
Light Metallic
Premium Standard



19" Alloy
Dark Hyper Silver
Sport Standard






Summer
Pilot Sport 4 SUV
235/55 R19 105 W

ENERG 

MICHELIN 475332

235/55R19 105 W C1

	
A	A
B	B
C	C
D	D
E	E

72 dB 

ABC

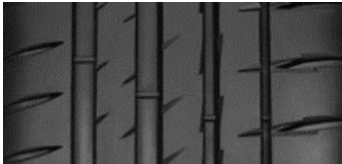
2020/740




21" Alloy
Dark Sputtering
Luxury Standard
Premium Optional



21" Alloy
Dark Sputtering
Sport Optional






Summer
Pilot Sport 4 SUV
255/40 R21 102 Y

ENERG 

MICHELIN 871173

255/40R21 102 Y C1

	
A	A
B	B
C	C
D	D
E	E

72 dB 

ABC

2020/740

OPTIONAL EQUIPMENT

Available extras and packs

Premium, Luxury & Sport	Innovation Pack	Reverse PCA (Parking Collision-avoidance Assist) • Dual front LED headlamps (low & high projection) with adaptive driving beam • 12.3 inch dashboard cluster 3D TFT display • Head-up display • FCA-JX (Forward Collision-avoidance Assist - Junction turning & crossing) • RSPA (Remote Smart Parking Assist) • Front parking sensors • SVM (Surround View Monitor) • Advanced seat occupant detection with radar sensor • BVM (Blind-spot View Monitor) • HDA II (Highway Drive Assist) • Wireless phone charger	5'160 CHF
	Wheels	Alloy wheels 21 inch	1'610 CHF
	e-LSD	Electronic limited slip differential	550 CHF
	Sunroof	Electric panoramic sunroof • Personal lamp (LED)	1'800 CHF
Additional options only for Premium	Convenience Pack	Electrochromatic outside rearview mirror • Heated seats (front) • Ambient lighting • Heated steering wheel • Rear air condition: auto temp. control (3rd zone) • Premium air filter	1'770 CHF
Additional options only for Luxury & Sport	Comfort Seat Pack	Ergo motion seats (driver & passenger) (massage function) • Electric lumbar support for (passenger) • Electric cushion extension (driver & passenger) • Electric side bolster (driver & passenger) • Lower cushion air support system (driver) • Ventilated seats (front) • Touch power seat adjustment switch	2'080 CHF
	Lexicon Audio System	Lexicon audio system • Speakers rear quarter	970 CHF
	Interior trim	Backlight interior garnish	300 CHF
	2nd row Comfort Seat Pack	Laminated rear glass • Heated seats (rear) • Manual rear side curtain • A/C inverter (220 V)	740 CHF
Additional options only for Luxury	Nappa Leather Seat Pack	Nappa leather seat cover • Suede headlining • Suede A/B/C pillars • Suede sunvisor (driver & passenger)	2'890 CHF
Additional options only for Sport	Nappa Leather Seat Pack	Nappa leather seat cover • Quilting for seats • Suede headlining • Suede A/B/C pillars • Suede sunvisor (driver & passenger)	3'390 CHF
	Interior trim	Carbon fiber interior garnish	300 CHF
	Brake Caliper Black	Brake caliper colour black	350 CHF
	Wheels	Alloy wheels 21 inch	1'610 CHF

TECHNICAL SPECIFICATIONS

BODY

	2.2D 8AT AWD	2.5T 8AT AWD
No. of doors / seats	4 / 5	
Length / Width / Height (running order)	4715 mm / 1910 mm / 1630 mm	
Wheelbase	2875 mm	
Track, front / rear	1649 mm / 1641 mm	
Overhang, front / rear	845 mm / 995 mm	
Minimum ground clearance	185 mm	
Minimum turning circle	11.50 m	
Fuel tank capacity	66 l	
Mass in running order (minimum)	2020 kg	1985 kg
Max. laden mass	2545 kg	2500 kg
Max. mass on each axle, front / rear	1295 kg / 1450 kg	
Max. trailer load, braked	2500 kg	
Max. trailer load, unbraked	750 kg	
Luggage comp. capacity (VDA)	542 l	
Coefficient of drag	0.32	

TRANSMISSION

	2.2D 8AT AWD	2.5T 8AT AWD
Transmission Type of Gearbox	8 speed automatic	
Gear ratios: I	3.964	
Gear ratios: II	2.468	
Gear ratios: III	1.610	
Gear ratios: IV	1.176	
Gear ratios: V	1.000	
Gear ratios: VI	0.832	
Gear ratios: VII	0.652	
Gear ratios: VIII	0.565	
Gear ratios: Rev	2.273	

DRIVING DYNAMICS AND SAFETY

	2.2D 8AT AWD	2.5T 8AT AWD
Suspension type, front	Macpherson Strut	
Suspension type, rear	Multi Link	
Brake type, front	19 inch disc, Φ 360 mm	
Brake type, rear	18 inch disc, Φ 345 mm	
Steering ratio	13.9	
Tyres, front / rear	235/55 R19 / 235/55 R19 255/40 R21 / 255/40 R21	
Rims, front / rear	8.0J x 19 / 8.0J x 19 9.0J x 21 / 9.0J x 21	

ENGINE

	2.2D 8AT AWD	2.5T 8AT AWD
Cylinder config./valves in-line	I4 / 16-VALVE HLA	
Effective capacity	2151 cm ³	2497 cm ³
Bore x Stroke	83.0 mm x 99.4 mm	88.5 mm x 101.5 mm
Compression ratio	16	10.5
Max. output	148 kW (201 PS) / 3800 rpm	223.6 kW (304 PS) / 5800 rpm
Max. torque	440 Nm / 2750 rpm	421.7 Nm / 4000 rpm

PERFORMANCE

	2.2D 8AT AWD	2.5T 8AT AWD
Acceleration 0–100 km/h	7.9 sec	6.1 sec
Acceleration 80–120 km/h	6.3 sec	4.4 sec
Top speed	215 km/h	240 km/h
Noise level, moving	68 dB(A)	

FUEL CONSUMPTION AND EMISSIONS - WLTP*

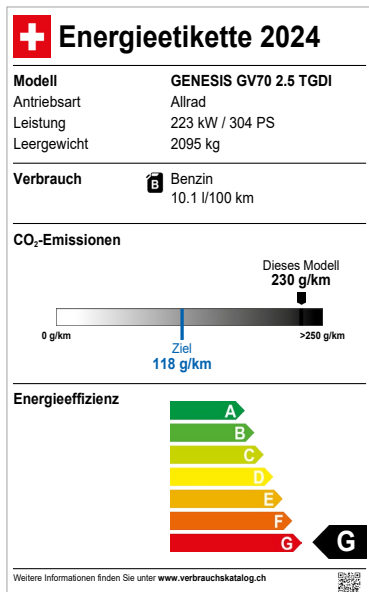
	2.2D 8AT AWD	2.5T 8AT AWD
Combined (low/high – l/100 km)	7.2 / 7.6	9.5 / 10.1
Combined CO ₂ (low/high – g/km)	190 / 200	216 / 230
LOW phase (low/high – l/100 km)	9.3 / 10.5	14.6 / 15.1
MID phase (low/high – l/100 km)	7.3 / 7.6	9.2 / 9.9
HIGH phase (low/high – l/100 km)	6.2 / 6.5	7.8 / 8.5
EXTRA HIGH phase (low/high – l/100 km)	7.4 / 7.5	9.1 / 9.6
Gasoline equivalent	8.66 l/100 km	-
LOW phase (low/high – g/km)	243 / 275	333 / 344
MID phase (low/high – g/km)	192 / 200	210 / 227
HIGH phase (low/high – g/km)	162 / 171	179 / 194
EXTRA HIGH phase (low/high – g/km)	194 / 198	207 / 220
CO ₂ Emissions from electricity provision	38.61 g/km	53.23 g/km
Combined Electricity Consumption	-	-
Energy Efficiency Class	F	G
Average CO ₂ Emissions of all models offered in Switzerland	122 g/km	
Provisional CO ₂ Emissions for models available in Switzerland	118 g/km	
Emission rating	Euro 6D	

*The Fuel consumption and emission values provided on this website are calculated using the Worldwide Harmonised Light Vehicles Test Procedure (WLTP). WLTP is a legally prescribed procedure for measuring Fuel consumption and CO₂ emissions under more realistic conditions than its predecessor, the New European Driving Cycle (NEDC). For vehicles newly type-approved since January 1, 2021, the official data only exists according to WLTP. Since the test conditions are more realistic, the Fuel consumption and CO₂ emission values measured under WLTP are often higher than those measured under NEDC.

Published in January 2024 | Prices are subject to change

GRAPHICAL REPRESENTATION OF THE ENERGY EFFICIENCY CLASSES

PETROL 2.5T 8AT AWD



DIESEL 2.2D 8AT AWD

