

# GENESIS ELECTRIFIED GV70



All prices are retail prices of Genesis Motor Switzerland AG including delivery and VAT, excluding registration fees. Including our 5 Year Care Plan and 5 years' warranty, according our 5 year Care Plan and warranty terms and conditions.

## GENESIS ELECTRIFIED GV70

Model Line

Colour

Wheels & Tyres

Optional Equipment

Model Line	Price	Main standard features
<b>Sport</b>	AWD 360 kW (490 PS) <b>77'900 CHF</b> Electric energy consumption (combined): 19.2 kWh/100km; CO <sub>2</sub> emissions (combined): 0 g/km; Energy Efficiency Class B; Electric Range (combined): 455 km.*	<b>Exterior</b> Dual front LED headlamps (low & high projection) • LED Daytime Running Light (DRL) • LED rear stop lamp • LED rear fog lamps • LED rear combination lamp • Lighting backup guidelines • Exterior mirrors electrical adjustment, heated & electrical folding • Outside door handles chrome coating • Upper chrome radiator grille • Auto headlights & dusk sensor • Front side laminated glass • Windshield acoustic film • Puddle lamp with logo
		<b>Wheels</b> Front & rear brake ventilated disc • Alloy wheels 19 inch • Tire pressure monitoring system • Preview ECS (Electronic Control Suspension) • Temporary Mobility Kit (TMK)
		<b>Interior</b> Cup holder center armrest • Leather steering wheel • Cloth headlining • Cloth A/B/C pillars • Cloth sunvisor (driver & passenger) • Leatherette console box • Console storage box • Rear luggage cover • Ambient lighting • EV mood lighting film garnish • Paddle shifter (lever type) • Electrochromatic inside rear view mirror
		<b>Seats</b> Leather & wool woven seat cover • Leatherette dashboard • Manual headrest adjustment (Driver & Passenger) • Electric Seat Adjustment (driver & passenger) • Driver seat with memory function • Electric lumbar support (driver) • Electric height adjuster (driver & passenger) • Electric cushion tilt-up (driver & passenger) • 60:40 split back folding for rear sets
		<b>Safety</b> Driver & passenger airbag • Driver knee airbag • Front thorax & pelvis, side curtain (front & rear) airbag • Center side (front) airbag • ABS + ESC + DBC + HAC + TSA (Trailer Stability Assist) + MCB (Multi-Collision Brake) • eCall (Europe) • Isofix child anchor: upper & lower (rear) • Child door lock (auto) • Rain sensor • Seat occupant detection
		<b>Advanced safety</b> HDA (Highway Driving Assist) • SCC (Smart Cruise Control) with stop & start • Rear BCA (Blind-spot Collision-avoidance Assist) • LKA (Lane Keeping Assist) • FCA (Forward Collision-avoidance Assist) (car/pedestrian/bicycle) • ISLA (Intelligent Speed Limit Assist) • MSLA (Manual Speed Limit Assist) • FCA-J (Forward Collision-avoidance Assist - Junction Turning) • LFA (Lane Following Assist)
		<b>Infotainment</b> 14,5 inch screen with navigation and DAB radio • Apple CarPlay & Android Auto • Genesis Connected Services • Steering wheel audio remote control • Bluetooth with voice recognition • Speakers front door • Speakers rear door low • Tweeter, external amp & centre (front) speaker • Wireless phone charger • 8 inch dashboard cluster TFT display • Front & rear parking sensors • RVM (Rear View Monitor camera) with dynamic guidelines on screen • Finger print reader authentication
		<b>Convenience</b> Electric tilt & telescopic steering wheel with memory function • EPB (Electric Parking Brake) with autohold • Smart key & button start • Immobilizer • Central door lock driver's & passenger's control • USB rear (2 ports) • Drive mode select • Electric rear tailgate opening & height adjustable • Power outlet for rear (lower center console) • Power outlet for trunk (RH) • USB charger console front (2 ports) • Front air conditioning with dual zone adjustment • Rear air condition (manual) • Console ventilation duct • 2nd row heating floor output • Auto window defogger • Standard interior air filter • Rear side & backlite privacy glass • Trailer package: wiring only
<b>BEV specific</b> 400 V / 800 V charging technology • eTerrain Mode • i-Pedal • Smart regenerative braking • Boost mode • Domestic cable (AC) ICCB (in cable control box) type 2 mode 2 • Public charging cable (AC) type 2 mode 3 • Battery heating system • Heat pump • Battery pre-conditioning		

\*The values are based on the Worldwide Harmonised Light Vehicles Test Procedure (WLTP). Further information on the WLTP measurement procedure can be found at <https://www.genesis.com/ch/en/wltp.html>

# COLOURS AND TRIM


## EXTERIOR COLOURS

Solid	Metallic					Pearl	Pearl Metallic	Matte		
Alta White 0 CHF	Savile Silver 940 CHF	Makalu Gray 940 CHF	Capri Blue 940 CHF	Mauna Red 940 CHF	Storr Green 940 CHF	Uyuni White 940 CHF	Vik Black 940 CHF	Matterhorn White 1'400 CHF	Makalu Gray 1'400 CHF	Storr Green 1'400 CHF

## INTERIOR COLOURS

Sport Standard	Obsidian Black	Pine Grove / Ocean Waves	Ocean Wave / Glacier White
Sport Optional	Obsidian Black	Pine Grove / Ocean Waves	Ocean Wave / Glacier White

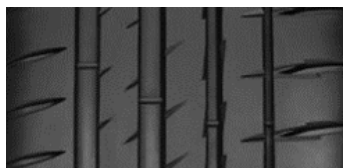
## TRIM

Sport Standard	
Sport Optional	Fog Scratched Aluminium


# WHEELS AND TYRES



19" Alloy  
Front Machined  
Sport





Summer  
Pilot Sport 4 SUV  
235/55 R19 105 W


**ENERG** 

**MICHELIN** 475332

235/55R19 105 W C1

	
A	A
B	B
C	C
D	D
E	E

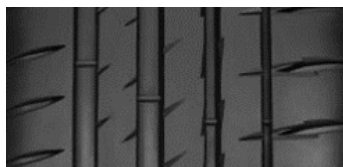
**B** **B**

72 dB   
ABC


2020/740



20" Alloy  
Dark Sputtering  
Sport





Summer  
Pilot Sport EV GOE  
265/45 R20 108 W XL


**ENERG** 

**MICHELIN** 442209

265/45R20 108 W XL C1

	
A	A
B	B
C	C
D	D
E	E

**B** **B**

72 dB   
ABC

2020/740

## OPTIONAL EQUIPMENT

Available options			
Sport	<b>Innovation Pack</b>	Reverse PCA (Parking Collision-avoidance Assist) • Dual front LED headlamps (low & high projection) with adaptive driving beam • 12.3 inch dashboard cluster 3D TFT display • Head-up display • FCA-JX (Forward Collision-avoidance Assist - Junction turning & crossing) • RSPA (Remote Smart Parking Assist) • SVM (Surround View Monitor) • Advanced seat occupant detection with radar sensor • BVM (Blind-spot View Monitor) • HDA II (Highway Drive Assist)	4'540 CHF
	<b>Convenience Pack</b>	Electrochromatic outside rearview mirror • Heated seats (front) • Heated steering wheel • Rear air condition: auto temp. control (3rd zone) • Premium air filter	1'500 CHF
	<b>Comfort Seat Pack</b>	Ergo motion seats (driver & passenger) (massage function) • Electric lumbar support (passenger) • Electric cushion extension (driver & passenger) • Electric side bolster (driver & passenger) • Lower cushion air support system (driver) • Ventilated seats (front) • Touch power seat adjustment switch	2'070 CHF
	<b>Lexicon Audio System</b>	Lexicon audio system • Speakers rear quarter • Tweeter (front & rear), external amp (mid) & center speaker (front) • Active road noise canceling	1'260 CHF
	<b>2nd row Comfort Seat Pack</b>	Laminated rear glass • Heated seats (front & rear) • Manual rear side curtain	700 CHF
	<b>Nappa Leather Seat Pack</b>	Nappa leather seat cover • Suede headlining • Suede A/B/C pillars • Suede sunvisor (driver & passenger)	2'940 CHF
	<b>Vehicle-to-Load-Package (V2L)</b>	Vehicle to load outside plug • Vehicle to load inside plug	1'120 CHF
	<b>Sunroof Pack</b>	Electric panoramic sunroof • Personal lamp (LED)	1'840 CHF
	<b>Convenience Pack + 2nd Row Comfort Seat Pack</b>	Laminated rear glass • Heated seats (front & rear) • Manual rear side curtain • Electrochromatic outside rear view mirror • Heated steering wheel • Rear air condition: auto temp. control (3rd zone) • Premium air filter	2'200 CHF
	<b>Interior trim</b>	Aluminium interior garnish	150 CHF
	<b>Wheels</b>	Alloy wheels 20 inch	800 CHF
	<b>Brake Caliper White</b>	Brake caliper colour white	360 CHF

# TECHNICAL SPECIFICATIONS

## BATTERY & E-MOTOR

Drivetrain	AWD
Type of gearbox	1-step gearbox
Total system power	360 kW (490 PS)
Front electric motor	180 kW (245 PS)
Rear electric motor	180 kW (245 PS)
Total max. torque	700 Nm
Type of battery	Li-ion
Battery Capacity	77.4 kWh
Operating Voltage	697 V
Weight	482.3 kg
On Board Charger Power	7 kW (Single-phase) / 11 kW (Three-phase)
Max. charging capability DC	240 kW

## ELECTRIC ENERGY CONSUMPTION & EMISSIONS WLTP\*

Electric consumption combined	19.2 kWh/100 km
Electric consumption city	14.8 kWh/100 km
Gasoline equivalent	2.19 l/100 km
CO <sub>2</sub> Emissions (combined)	0 g/km
CO <sub>2</sub> Emissions from electricity provision	18.71 g/km
Range combined	455 km
Range city	590 km
Energy Efficiency Class	B
Average CO <sub>2</sub> Emissions of all models offered in Switzerland	122 g/km
Provisional CO <sub>2</sub> Emissions for models available in Switzerland	118 g/km

## VEHICLE TO LOAD CAPACITY

Max. power	3.7 kW
------------	--------

## CHARGING CABLES

Domestic Cable (AC) ICCB (In cable control box)	
Length	5 m
Max. Voltage	230 V
Max. Amperage	12 A
Type	Type 2 <-> Type E
Public charging cable (AC) Type 2 Mode 3	
Length	5 m
Max. Voltage	480 V
Max. Amperage	32 A
Type	Type 2 <-> Type 2

## BODY

No. of doors / seats	4 / 5
Length/Height	4715 mm / 1630 mm
Width mirror folded	1995 mm
Width mirror deployed	2165 mm
Wheelbase	2875 mm
Overhang, front / rear	845 mm / 995 mm
Minimum ground clearance	174 mm
Minimum turning circle	11.5 m
Mass in running order (minimum)	2310 kg
Max. laden mass	2845 kg
Roof load	100kg
Trunk volume rear (min / max)	503 l / 1678 l
Trunk volume front ("Frunk")	25 l
Coefficient of drag	0.29
Max. towing capacity (braked/unbraked)	1800 kg / 750 kg

## DRIVING DYNAMICS AND SAFETY

Suspension type, front	Mcpherson Strut
Suspension type, rear	Multi Link
Brake type, front	ventilated / Ø360X34t
Brake type, rear	ventilated / Ø345X20t

## PERFORMANCE

Acceleration 0–100 km/h (Boost deactivated / activated)	4.8 / 4.2 sec
Acceleration 80–120 km/h (Boost deactivated / activated)	2.8 / 2.5 sec
Top speed	235 km/h
Noise Level, moving	69 dB(A)

## CHARGING TIME

DC ultra fast charging (10% > 80%) 350 kW	18 Minutes
DC fast charging (10% > 80%) 50 kW	73 Minutes
AC wall box charging (10% > 100%) 11 kW / 16 A (3 Phase)	7h 20m
AC domestic socket charging (10% > 100%) 2.7 kW / 12 A (1 Phase)	34h 20m

\* The consumption and emission values shown were determined according to the statutory legal measurement procedures. The fuel consumption and emission values shown are based on the Worldwide Harmonised Light Vehicles Test Procedure (WLTP). Further information on the WLTP measurement procedures can be found at <https://www.genesis.com/ch/en/wltp.html>. Due to the more realistic test conditions, the fuel consumption and CO<sub>2</sub> emission values measured in accordance with the WLTP are often higher than those measured according to the NEDC. The optional equipment you have selected during configuration may result in your configured model corresponding to a different approved vehicle type than a vehicle without the optional equipment. This may also cause deviations in the values for the configured model.


# GRAPHICAL REPRESENTATION OF THE ENERGY EFFICIENCY CLASSES

## EV AWD

**+** **Energieetikette 2024**

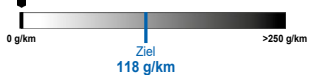
<b>Modell</b>	GENESIS GV70 EV
<b>Antriebsart</b>	Allrad
<b>Leistung</b>	360 kW / 489 PS
<b>Leergewicht</b>	2385 kg

---

**Verbrauch**  Elektrisch  
19.2 kWh/100 km

---


**CO<sub>2</sub>-Emissionen**  
Dieses Modell  
**0 g/km**



0 g/km Ziel 118 g/km >250 g/km

---


**Energieeffizienz**



A  
B  
C  
D  
E  
F  
G

**B**

Weitere Informationen finden Sie unter [www.verbrauchskatalog.ch](http://www.verbrauchskatalog.ch)



TC 10420 (1/16)