

# GENESIS ELECTRIFIED GV70



All prices are recommended retail prices of Genesis Motor UK Limited incl. statutory VAT. Additional delivery costs, which vary according to your location, may apply.

## GENESIS ELECTRIFIED GV70

Model Line

Colour

Wheels & Tyres

Optional Equipment

Model Line	Price OTR <sup>+</sup>	Main standard features
Sport	AWD 360 kW (490 PS) <b>£65,105<sup>+</sup></b>	<b>Exterior</b> Dual front LED headlamps (low & high projection) • LED Daytime Running Light (DRL) • LED rear stop lamp • LED rear fog lamps • LED rear combination lamp • Lighting backup guidelines • Exterior mirrors electrical adjustment, heated & electrical folding • Outside door handles chrome coating • Upper chrome radiator grille • Auto headlights & dusk sensor • Front side laminated glass • Windshield acoustic film • Puddle lamp with logo
		<b>Wheels</b> Front & rear brake ventilated disc • Alloy wheels 19 inch • Tire pressure monitoring system • Preview ECS (Electronic Control Suspension) • Temporary Mobility Kit (TMK)
		<b>Interior</b> Cup holder center armrest • Leather steering wheel • Cloth headlining • Cloth A/B/C pillars • Cloth sunvisor (driver & passenger) • Leatherette console box • Console storage box • Rear luggage cover • Ambient lighting • EV mood lighting film garnish • Paddle shifter (lever type) • Electrochromatic inside rear view mirror
		<b>Seats</b> Leather & wool woven seat cover • Leatherette dashboard • Manual headrest adjustment (Driver & Passenger) • Electric Seat Adjustment (driver & passenger) • Driver seat with memory function • Electric lumbar support (driver) • Electric height adjuster (driver & passenger) • Electric cushion tilt-up (driver & passenger) • 60:40 split back folding for rear sets
		<b>Safety</b> Driver & passenger airbag • Driver knee airbag • Front thorax & pelvis, side curtain (front & rear) airbag • Center side (front) airbag • ABS + ESC + DBC + HAC + TSA (Trailer Stability Assist) + MCB (Multi-Collision Brake) • eCall (Europe) • Isofix child anchor: upper & lower (rear) • Child door lock (auto) • Rain sensor • Seat occupant detection
		<b>Advanced safety</b> HDA (Highway Driving Assist) • SCC (Smart Cruise Control) with stop & start • Rear BCA (Blind-spot Collision-avoidance Assist) • LKA (Lane Keeping Assist) • FCA (Forward Collision-avoidance Assist) (car/pedestrian/bicycle) • ISLA (Intelligent Speed Limit Assist) • MSLA (Manual Speed Limit Assist) • FCA-J (Forward Collision-avoidance Assist - Junction Turning) • LFA (Lane Following Assist)
		<b>Infotainment</b> 14.5 inch screen with navigation and DAB radio • Apple CarPlay & Android Auto • Genesis Connected Services • Steering wheel audio remote control • Bluetooth with voice recognition • Speakers front door • Speakers rear door low • Tweeter, external amp & centre (front) speaker • Wireless phone charger • 8 inch dashboard cluster TFT display • Front & rear parking sensors • RVM (Rear View Monitor camera) with dynamic guidelines on screen • Finger print reader authentication
		<b>Convenience</b> Electric tilt & telescopic steering wheel with memory function • EPB (Electric Parking Brake) with autohold • Smart key & button start • Immobilizer • Central door lock driver's & passenger's control • USB rear (2 ports) • Drive mode select • Electric rear tailgate opening & height adjustable • Power outlet for rear (lower center console) • Power outlet for trunk (RH) • USB charger console front (2 ports) • Front air conditioning with dual zone adjustment • Rear air condition (manual) • Console ventilation duct • 2nd row heating floor output • Auto window defogger • Standard interior air filter • Rear side & backlite privacy glass • Trailer package: wiring only
<b>BEV specific</b> 400 V / 800 V charging technology • eTerrain Mode • i-Pedal • Smart regenerative braking • Boost mode • Domestic cable (AC) ICCB (in cable control box) type 2 mode 2 • Public charging cable (AC) type 2 mode 3 • Battery heating system • Heat pump • Battery pre-conditioning		

<sup>+</sup> 'On The Road' price includes vehicle, number plates, delivery, first registration fee, 5-Year Care Plan and VAT.

# COLOURS AND TRIM

## EXTERIOR COLOURS

Solid	Metallic			Pearl		Pearl Metallic	Matte			
Alta White £0	Savile Silver £750	Makalu Gray £750	Capri Blue £750	Mauna Red £750	Storr Green £750	Uyuni White £750	Vik Black £750	Matterhorn White £1,130	Makalu Gray £1,130	Storr Green £1,130

## INTERIOR COLOURS

Sport Standard	Obsidian Black	Pine Grove / Ocean Waves	Ocean Wave / Glacier White
	Obsidian Black	Pine Grove / Ocean Waves	Ocean Wave / Glacier White

## TRIM

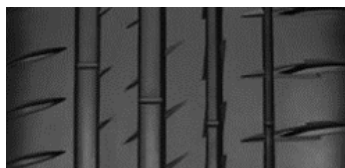
Sport Standard	Backlit Mood Lighting
Sport Optional	Textured Effect Aluminium

Some illustrations show optional equipment.

# WHEELS AND TYRES



19" Alloy  
Front Machined  
Sport



Summer  
Pilot Sport 4 SUV  
235/55 R19 105 W

**ENERGY**

MICHELIN 475332

235/55R19 105 W C1

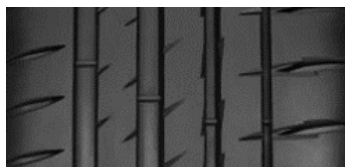
A	A
B	B
C	C
D	D
E	E

72 dB  
ABC

2020/740



20" Alloy  
Dark Sputtering  
Sport



Summer  
Pilot Sport EV GOE  
265/45 R20 108 W XL

**ENERGY**

MICHELIN 442209

265/45R20 108 W XL C1

A	A
B	B
C	C
D	D
E	E

72 dB  
ABC

2020/740

## OPTIONAL EQUIPMENT

Available options			
Sport	<b>Innovation Pack</b>	Reverse PCA (Parking Collision-avoidance Assist) • Dual front LED headlamps (low & high projection) with adaptive driving beam • 12.3 inch dashboard cluster 3D TFT display • Head-up display • FCA-JX (Forward Collision-avoidance Assist - Junction turning & crossing) • RSPA (Remote Smart Parking Assist) • SVM (Surround View Monitor) • Advanced seat occupant detection with radar sensor • BVM (Blind-spot View Monitor) • HDA II (Highway Drive Assist)	£3,620
	<b>Convenience Pack</b>	Electrochromatic outside rear view mirror • Heated seats (front) • Heated steering wheel • Rear air condition: auto temp. control (3rd zone) • Premium air filter	£1,200
	<b>Comfort Seat Pack</b>	Ergo motion seats (driver & passenger) (massage function) • Electric lumbar support (passenger) • Electric cushion extension (driver & passenger) • Electric side bolster (driver & passenger) • Lower cushion air support system (driver) • Ventilated seats (front) • Touch power seat adjustment switch	£1,660
	<b>Lexicon Audio System</b>	Lexicon audio system • Speakers rear quarter • Tweeter (front & rear), external amp (mid) & center speaker (front) • Active road noise canceling	£1,010
	<b>2nd row Comfort Seat Pack</b>	Laminated rear glass • Heated seats (front & rear) • Manual rear side curtain	£600
	<b>Nappa Leather Seat Pack</b>	Nappa leather seat cover • Suede headlining • Suede A/B/C pillars • Suede sunvisor (driver & passenger)	£2,350
	<b>Vehicle-to-Load-Package (V2L)</b>	Vehicle to load outside plug • Vehicle to load inside plug	£900
	<b>Sunroof Pack</b>	Electric panoramic sunroof • Personal lamp (LED)	£1,460
	<b>Convenience Pack + 2nd Row Comfort Seat Pack</b>	Laminated rear glass • Heated seats (front & rear) • Manual rear side curtain • Electrochromatic outside rear view mirror • Heated steering wheel • Rear air condition: auto temp. control (3rd zone) • Premium air filter	£1,800
	<b>Interior trim</b>	Aluminium interior garnish	£120
	<b>Wheels</b>	Alloy wheels 20 inch	£640
	<b>Brake Caliper White</b>	Brake caliper colour white	£280

# TECHNICAL SPECIFICATIONS

## BATTERY & E-MOTOR

Drivetrain	AWD
Type of gearbox	1-step gearbox
Total system power	360 kW (490 PS)
Front electric motor	180 kW (245 PS)
Rear electric motor	180 kW (245 PS)
Total max. torque	700 Nm
Type of battery	Li-ion
Battery Capacity	77.4 kWh
Operating Voltage	697 V
Weight	482.3 kg
On Board Charger Power	7 kW (Single-phase) / 11 kW (Three-phase)
Max. charging capability DC	240 kW

## ELECTRIC ENERGY CONSUMPTION WLTP <sup>1,2</sup>

Electric consumption combined	19.2 kWh/100 km
Electric consumption city	14.8 kWh/100 km
Range combined	283 miles
Range city	367 miles

## CHARGING TIME <sup>2</sup>

DC ultra fast charging (10% > 80%) 350 kW	18 Minutes <sup>3</sup>
DC fast charging (10% > 80%) 50 kW	73 Minutes
AC wall box charging (10% > 100%) 11 kW / 16 A (3 Phase)	7h 20m
AC domestic socket charging (10% > 100%) 2.7 kW / 12 A (1 Phase)	34h 20m

## VEHICLE TO LOAD CAPACITY

Max. power	3.7 kW
------------	--------

## CHARGING CABLES

Domestic Cable (AC) ICCB (In cable control box)	
Length	5 m
Max. Voltage	230 V
Max. Amperage	10 A
Type	Type 2 <-> Type G
Public charging cable (AC) Type 2 Mode 3	
Length	5 m
Max. Voltage	480 V
Max. Amperage	32 A
Type	Type 2 <-> Type 2

## BODY

No. of doors / seats	4 / 5
Length/Height	4715 mm / 1630 mm
Width mirror folded	1995 mm
Width mirror deployed	2165 mm
Wheelbase	2875 mm
Overhang, front / rear	845 mm / 995 mm
Minimum ground clearance	174 mm
Minimum turning circle	11.5 m
Mass in running order (minimum)	2310 kg
Max. laden mass	2845 kg
Roof load	100kg
Trunk volume rear (min / max)	503 l / 1678 l
Trunk volume front ("Frunk")	25 l
Coefficient of drag	0.29
Max. towing capacity (braked/unbraked)	1800 kg / 750 kg

## DRIVING DYNAMICS AND SAFETY

Suspension type, front	Mcpherson Strut
Suspension type, rear	Multi Link
Brake type, front	ventilated / Ø360X34t
Brake type, rear	ventilated / Ø345X20t

## PERFORMANCE

Acceleration 0–100 km/h (Boost deactivated / activated)	4.8 / 4.2 sec
Acceleration 80–120 km/h (Boost deactivated / activated)	2.8 / 2.5 sec
Top speed	146 mph
Noise Level, moving	69 dB(A)

<sup>1</sup> The consumption and emission values shown were determined according to the statutory legal measurement procedures. The fuel consumption and emission values shown are based on the Worldwide Harmonised Light Vehicles Test Procedure (WLTP). Further information on the WLTP measurement procedures can be found at <https://www.genesis.com/uk/en/wltp.html>. Due to the more realistic test conditions, the fuel consumption and CO<sub>2</sub> emission values measured in accordance with the WLTP are often higher than those measured according to the NEDC.

<sup>2</sup> The electric energy consumption, charge time and performance figures may not reflect real life driving results, which will depend upon a number of factors including the starting charge of the battery, accessories fitted (post-registration), variations in weather, driving styles and vehicle load. The optional equipment you have selected during configuration may result in your configured model corresponding to a different approved vehicle type than a vehicle without the optional equipment. This may also cause deviations in the values for the configured model.

<sup>3</sup> Only with 350 kW ultra-rapid chargers which are not widely available in the UK.