

GENESIS GV80



Model shown is the G80 Premium and includes options available at an additional cost. All prices are recommended retail prices of Genesis Motor UK Limited incl. statutory VAT. Additional delivery costs, which vary according to your location, may apply.

GENESIS GV80

Model Line

Engine

Colour

Optional Equipment

Model Line	Price OTR+	Main standard features
Premium	Petrol 2.5T 8AT AWD 224 kW (304 PS) L9G1 5 Seater (GX1) £60,525	Exterior Dual front LED headlamps (low & high projection) • LED Daytime Running Light (DRL) • LED rear stop lamp • LED rear fog lamps • LED side fender lamp • LED rear combination lamp • Lighting backup guidelines • Outside rear mirrors electrical adjustment, heated & electrical folding • Puddle lamp with logo • Electrochromatic outside rear view mirror • Dual rear muffler (black paint) & chrome coating • Outside door handles chrome coating • Auto headlights & dusk sensor • Front side laminated glass • Windshield acoustic film
		Wheels Front & rear brake ventilated disc • Alloy wheels 20 inch • Michelin tyre • Tyre pressure monitoring system • Preview ECS (Electronic Control Suspension) • Temporary Mobility Kit (TMK)
		Interior Leatherette Dashboard • Drink holder at centre armrest • Real wood interior garnish • Leather steering wheel • Fabric headlining • Fabric A/B/C pillars • Fabric sunvisor (driver & passenger) • Console storage box with dual pop up • Rear luggage cover • 2nd row vanity mirror • Electrochromatic inside rear view mirror • Paddle shifter
		Seats Leatherette seat cover • Manual headrest adjustment (1st & 2nd Row) • Electric seat adjustment (driver & passenger) (driver seat with memory function) • Electric lumbar support (driver & passenger) • Electric height adjuster (driver & passenger) • Electric cushion tilt-up (driver & passenger) • 40:20:40 split back folding for rear seats (NOT AVAILABLE FOR LUXURY PLUS) • Heated seats (front)
		Safety Driver & passenger airbag • Front thorax & pelvis, rear thorax & side curtain (FF & RR) airbag • Driver knee airbag • Centre side (front) airbag • ABS + ESC + HAC + MCB (Multi Collision Brake) • Isofix child anchor: upper & lower (rear) • Child door lock (auto) • Rain sensor
		Advanced safety SCC (Smart Cruise Control) with stop & start • Rear BCA (Blind-spot Collision-avoidance Assist) • LKA (Lane Keeping Assist) • FCA (Forward Collision-avoidance Assist) (car/pedestrian/bicycle) • ISLA (Intelligent Speed Limit Assist) • MSLA (Manual Speed Limit Assist) • FCA-J (Forward Collision-avoidance Assist - Junction Turning) • LFA (Lane Following Assist)
		Infotainment 14.5 inch screen with navigation, DAB radio & Genesis Connected Services • Apple Carplay & Android Auto • Speakers front & rear door • Tweeter, external amp & centre (front) speaker • Steering wheel audio remote control • Bluetooth with voice recognition • 8 inch dashboard cluster TFT display • Front & rear parking sensors • RVM (Rear View Monitor camera) with dynamic guidelines on screen
		Convenience Electric tilt & telescopic steering wheel with memory seat • EPB (Electric Parking Brake) with auto hold • Smart key & button start • Immobiliser • Central door lock driver's & passenger's control • 2x USB rear • Drive mode select • Electric rear tailgate opening & height adjustable • Power outlet for rear (lower centre console) • Power outlet for trunk (RH) • USB charger console front (2 port) • 2-zone climate control • Rear air condition: manual • Console ventilation duct • 2nd row heating floor output • Auto window defogger • Standard interior air filter

⁺On The Road' price includes vehicle, number plates, delivery, first registration fee, first year VED (Vehicle Excise Duty), 5-Year Care Plan and VAT.

Vehicles with a retail price over £40,000 (including paint, options, delivery and packs) when new, pay an additional £335 per year on top of the standard rate of VED, for five years from the start of the second year VED.

Model Line	Price OTR+	Luxury includes main standard features of Premium	
Luxury	Petrol 2.5T 8AT AWD 224 kW (304 PS) L9G1 7 Seater (GX4) £66,625	Exterior	Matte chrome exterior garnish <small>(ONLY AVAILABLE WITH MATTE EXTERIOR COLOUR)</small>
		Wheels	Alloy wheels 22 inch
		Interior	Heated steering wheel
		Seats	Leather seat cover • Quilting for seats • Heated seats (front & rear)
		Convenience	Manual rear side curtain • 3-zone climate control • Premium interior air filter

Model Line	Price OTR+	Luxury Plus includes main standard features of Premium	
Luxury Plus	Petrol 2.5T 8AT AWD 224 kW (304 PS) L9G1 6 Seater (GX5) £75,825	Exterior	Dual front LED headlamps (low & high projection) with adaptive driving beam • Matte chrome exterior garnish <small>(ONLY AVAILABLE WITH MATTE EXTERIOR COLOUR)</small>
		Wheels	Alloy wheels 22 inch
		Interior	Two tone leather steering wheel heated • Suede headlining • Suede A/B/C pillars • Suede sunvisor (driver & passenger)
		Seats	Nappa leather seat cover • Quilting for seats • Electric lumbar support (passenger) • Ergo motion seats (driver & passenger) • Electric cushion extension (driver & passenger) • Electric side bolster & lower cushion air support system (driver & passenger) • Electric cushion tilt adjuster (rear LH & rear RH) • Electric 50:50 back folding for rear seats • 3rd row rear seats electric folding & unfolding • Heated seats (front & 2nd row) • Ventilated seats (front & 2nd row) • Touch power seat adjustment • Rear seat alert (with sensor) • 2nd row wing-out headrest • 2nd row hot & cold cupholder on center armrest
		Advanced safety	FCA-JX (Forward Collision-avoidance Assist - Junction Turning & Crossing) • Reverse PCA (Parking Collision-avoidance Assist) • RSPA (Remote Smart Parking Assist) • BVM (Blind-spot View Monitor) • HDA (Highway Driving Assist) II
		Infotainment	Lexicon audio system • Speakers rear quarter • Tweeter (FRT & RR), external amp (high), centre (FRT) & Surround Sound • Active road noise cancelling • Dual rear monitor • Centre armrest with control box • Wireless phone charger • Head-up display • 12.3 inch dashboard cluster 3D TFT display • SVM (Surround View Monitor cameras)
Convenience	Laminated rear glass • Electric rear side curtain • 3-zone climate control • Premium interior air filter • A/C inverter (220V) • Front & rear soft door close • Rear side laminated glass		

Model Line	Price OTR+	Sport includes main standard features of Premium	
Sport	Petrol 2.5T 8AT AWD 224 kW (304 PS) L9G1 5 Seater (GX6) £66,325	Exterior	Dark chrome exterior garnish <small>(NOT AVAILABLE WITH MATTE EXTERIOR COLOUR)</small> • Matte chrome exterior garnish <small>(ONLY AVAILABLE WITH MATTE EXTERIOR COLOUR)</small>
		Wheels	Brake caliper color copper • Alloy wheels 22 inch black
		Interior	Aluminium interior garnish • Heated steering wheel
		Seats	Leather seat cover • Quilting for seats • Heated seats (front & 2nd row)
		Convenience	Manual rear side curtain • 3-zone climate control • Premium interior air filter

*On The Road' price includes vehicle, number plates, delivery, first registration fee, first year VED (Vehicle Excise Duty), 5-Year Care Plan and VAT.

Vehicles with a retail price over £40,000 (including paint, options, delivery and packs) when new, pay an additional £335 per year on top of the standard rate of VED, for five years from the start of the second year VED.

COLOURS AND TRIM

EXTERIOR COLOURS – PREMIUM

Solid	Pearl Metallic	Metallic	Pearl
Alta White £0	Vik Black £750	Savile Silver £750	Makalu Gray £750
			Uyuni White £750
			Capri Blue £750

EXTERIOR COLOURS – LUXURY, LUXURY PLUS & SPORT

Solid	Pearl Metallic	Metallic	Pearl	Matte
Alta White £0	Vik Black £750	Savile Silver £750	Makalu Gray £750	Uyuni White
			Capri Blue £750	Makalu Gray £1,130
				Matterhorn White £1,130

INTERIOR COLOURS

Premium	Obsidian Black	Vanilla Beige / Obsidian Black	Vanilla Beige / Urban Brown		
Luxury & Sport Standard	Obsidian Black	Vanilla Beige / Obsidian Black	Urban Brown / Vanilla Beige		
Luxury & Sport Optional & Luxury Plus Standard	Obsidian Black	Vanilla Beige / Obsidian Black	Urban Brown / Vanilla Beige	Dune / Ultramarine Blue	Smoky Green / Chestnut Brown

TRIM

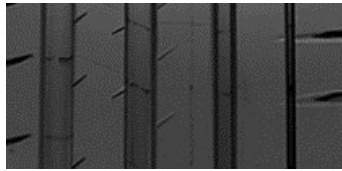
Premium	Black High Glossy
	Black Ash Real Wood
	Olive Ash Real Wood
	Birch Real Wood
Luxury & Sport Optional & Luxury Plus Standard	Pore Filler Ash Real Wood

Some illustrations show optional equipment.

WHEELS AND TYRES



20" Alloy
Medium Metallic Grey (Machine-finished)
Premium Standard



Summer
Pilot Sport 4 SUV
265/50 R20

ENERGY

MICHELIN 366906

265/50R20 111 W C1

A	A
B	B
C	C
D	D
E	E

72 dB ABC

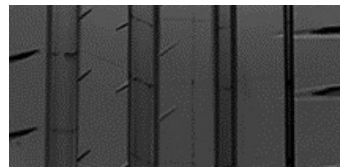
2020/740



22" Alloy
Medium Sputtering
Premium Optional
Luxury & Luxury Plus Standard



22" Alloy
Black
Sport Standard



Summer
Pilot Sport 4 SUV
265/40 R22

ENERGY

MICHELIN 747714

265/40R22 106 Y C1

A	A
B	B
C	C
D	D
E	E

72 dB ABC

2020/740

OPTIONAL EQUIPMENT

Model Line	Available extras and packs		
Premium	Wheels	Alloy wheels 22 inch	£1,460
	Innovation Pack <small>(Standard already on Luxury Plus)</small>	Reverse PCA (Parking Collision-avoidance Assist) • Dual front LED headlamps (low & high projection) with adaptive driving beam • 12.3 inch dashboard cluster 3D TFT display • Head-up display • FCA-JX (Forward Collision-avoidance Assist - Junction Turning & Crossing) • RSPA (Remote Smart Parking Assist) • SVM (Surround View Monitor cameras) • Rear seat alert (with sensor) • BVM (Blind-spot View Monitor) • HDA (Highway Driving Assist) II • Wireless phone charger	£3,900
	Sunroof	Electric panoramic sunroof • Personal lamp (LED)	£1,460
	e-LSD	Electronic Limited Slip Differential	£450
	Spare Tyre	Temporary spare tyre <small>(NOT AVAILABLE FOR LUXURY PLUS AND 7 SEATER)</small>	£40
Premium Luxury Luxury Plus Sport	Comfort Seat Pack <small>(Standard already on Luxury Plus)</small>	Ergo motion seats (driver & passenger) • Electric cushion extension (driver & passenger) • Ventilated seats (front) • Touch power seat adjustment switch • Electric lumbar support (passenger) • Electric side bolster & lower cushion air support system (driver & passenger)	£1,650
	Lexicon Audio System <small>(Standard already on Luxury Plus)</small>	Lexicon audio system • Speakers rear quarter • Tweeter (FRT & RR), external amp (high), centre (FRT) & Surround Sound • Active road noise cancelling	£1,020
	Nappa Leather Seat Pack <small>(Standard already on Luxury Plus) (NOT AVAILABLE WITH ALUMINUM GARNISH)</small>	Nappa leather seat cover • Two tone leather steering wheel heated • Suede headlining • Suede A/B/C pillars • Suede sunvisor (driver & passenger)	£2,350
	2nd and 3rd Row Comfort Seat Pack <small>(Standard already on Luxury Plus) (NOT AVAILABLE FOR 5 SEATER)</small>	Laminated rear glass • Electric 40:20:40 back folding for rear seats • Electric rear cushion tilt adjuster (LH/RH) • Rear seats electric folding & unfolding • Ventilated seats (front & rear) • Front & rear soft door close • Electric rear side curtain • A/C inverter (220V)	£2,120
	Comfort Seat Pack + 2nd and 3rd Row Comfort Pack <small>(Standard already on Luxury Plus) (NOT AVAILABLE FOR 5 SEATER)</small>	Laminated rear glass • Ergo motion seats (driver & passenger) • Electric cushion extension (driver & passenger) • Electric 40:20:40 back folding for rear seats • Electric rear cushion tilt adjuster (LH/RH) • Rear seats electric folding & unfolding • Ventilated seats (front & rear) • Touch power seat adjustment switch • Electric lumbar support (passenger) • Electric side bolster & lower cushion air support system (driver & passenger) • Front & rear soft door close • Electric rear side curtain • A/C inverter (220V)	£3,770
	2nd Row Comfort Pack 5 Seater	Laminated rear glass • Electric 40:20:40 back folding for rear seats • Electric rear seats sliding (LH/RH) • Electric rear cushion tilt adjuster (LH/RH) • Ventilated seats (front & rear) • Front & rear soft door close • Electric rear side curtain • A/C inverter (220V)	£1,970
	Comfort Seat Pack + 2nd Row Comfort Pack 5 Seater	Laminated rear glass • Ergo motion seats (driver & passenger) • Electric cushion extension (driver & passenger) • Electric 40:20:40 back folding for rear seats • Electric rear seats sliding (LH/RH) • Electric rear cushion tilt adjuster (LH/RH) • Ventilated seats (front & rear) • Touch power seat adjustment switch • Electric lumbar support (passenger) • Electric side bolster & lower cushion air support system (driver & passenger) • Front & rear soft door close • Electric rear side curtain • A/C inverter (220V)	£3,620
Additional options only for Sport	Interior	Real wood interior garnish <small>(ONLY AVAILABLE WITH NAPPA LEATHER SEATS PACK)</small>	£0

TECHNICAL SPECIFICATIONS – PETROL 2.5T AWD AT8

BODY

	5 Seater	6 Seater	7 Seater
No. of doors / seats	5 / 5	5 / 6	5 / 7
Length / Width / Height (running order)	4945 mm / 1975 mm / 1715 mm		
Wheelbase	2955 mm		
Width, mirror folded / deployed	1993 mm / 2146 mm		
Track, front / rear	1674 mm / 1689 mm		
Overhang, front / rear	880 mm / 1110 mm		
Minimum ground clearance	205 mm		
Minimum turning circle	11.98 m		
Fuel tank capacity	80 l		
Mass in running order (minimum)	2155 kg	2200 kg	
Max. load mass	2825 kg	2890 kg	
Max. mass on each axle, front / rear	1440 kg / 1625 kg	1355 kg / 1765 kg	
Max. trailer load, braked	2722 kg		
Max. trailer load, unbraked	750 kg		
Wading depth	400 mm		
Luggage comp. capacity (VDA)	735 l	727 l	
Max. Luggage comp. capacity (VDA)	2152 l	2139 l	2144 l
Coefficient of drag	0.27		

ENGINE

	5 Seater	6 Seater	7 Seater
Cylinder config./valves in-line	14 / 16-VALVE HLA		
Effective capacity	2497 cm ³		
Bore x Stroke	88.5 mm x 101.5 mm		
Compression ratio	10.5		
Max. output	224 kW (304 PS) / 5800 rpm		
Max. torque	422 Nm / 1650–4000 rpm		

DRIVING DYNAMICS AND SAFETY

	5 Seater	6 Seater	7 Seater
Suspension type, front	Multi Link		
Suspension type, rear	Multi Link		
Brake type, front	4 pot-caliper brake, Φ 380 mm		
Brake type, rear	1 pot-caliper brake, Φ 360 mm		
Euro NCAP rating	5 stars		
Steering	MDPS, electric power steering		
Steering ratio	14.14		
Turning circle	11.98 m		
Tyres, front / rear	265/50 R20 / 265/50 R20 265/40 R22 / 265/40 R22		
Rims, front / rear	8.5J x 20 / 8.5J x 20 9.5J x 22 / 9.5J x 22		

PERFORMANCE

	5 Seater	6 Seater	7 Seater
Acceleration 0–62 mph	6.9 sec		
Acceleration 50–75 mph	5 sec		
Top speed	147 mph		

TRANSMISSION

	5 Seater	6 Seater	7 Seater
Transmission Type of Gearbox	8 speed automatic		
Gear ratios: I	3.964		
Gear ratios: II	2.468		
Gear ratios: III	1.610		
Gear ratios: IV	1.176		
Gear ratios: V	1.000		
Gear ratios: VI	0.832		
Gear ratios: VII	0.652		
Gear ratios: VIII	0.565		
Gear ratios: Rev	2.273		

FUEL CONSUMPTION AND EMISSIONS – WLTP*

	5 Seater	6 Seater	7 Seater
Low	18.0 - 18.3 mpg (15.7 - 15.4 l/100km)		
Mid	26.4 - 28.2 mpg (10.7 - 10.0 l/100km)		
High	29.9 - 31.1 mpg (9.5 - 9.1 l/100km)		
Extra High	25.3 - 25.5 mpg (11.2 - 11.1 l/100km)		
Combined	25.3 - 26.1 mpg (11.1 - 10.8 l/100km)		
Combined CO ₂	248 - 241 g/km		
Emission rating	Euro 6D		

*The consumption and emission values shown were determined according to the statutory legal measurement procedures. The fuel consumption and emission values shown are based on the Worldwide Harmonised Light Vehicles Test Procedure (WLTP). Further information on the WLTP measurement procedures can be found at <https://www.genesis.com/uk/en/wltp.html>. Due to the more realistic test conditions, the fuel consumption and CO₂ emission values measured in accordance with the WLTP are often higher than those measured according to the NEDC.